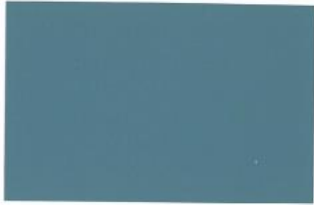


Color Selection Guide

Featuring TRINAR®



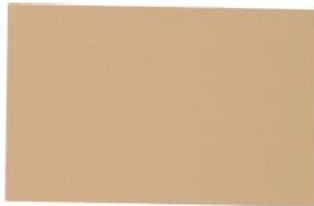
02 - SLATE BLUE



03 - ARCTIC WHITE *



04 - CHARCOAL GREY



05 - BUCKSKIN TAN *



06 - BURNISHED SLATE



07 - PARCHMENT *



08 - EVERGREEN



09 - ASH GREY *



10 - ANTIQUE RED *



11 - CHOCOLATE BROWN



12 - HARBOR BLUE



13 - LIGHTSTONE *

TRINAR® 70% Fluoropolymer

This tough, flexible, strongly-bonded finish provides the following benefits:

- Excellent UV resistance • Excellent heat resistance • Excellent chemical resistance
- Unparalleled gloss and color retention • Uses only the highest quality ceramic and inorganic pigments for the finest metal finish available
- Resists chalking, fading, chipping and cracking • Resists staining due to airborne pollutants

* TRINAR® CC colors, formulated in TRINAR's® COOL CHEMISTRY® Series, contain ceramic infrared reflective pigments which are designed to reflect infrared energy and comply with Energy Star guidelines.

All TRINAR® colors featured in the Above Color Selection Guide include a 35-year limited warranty.

AkzoNobel